



YFO

'11 Third Quarter Investor Conference

October 31, 2011

2011 Q3 Profit & Loss

| (NT\$ MN) | 2011 | | 2011 | | QoQ | 2010 | | YoY % |
|---------------------|--------|-------|---------|-------|--------|--------|------|--------|
| | Q3 | % | Q2 | % | | Q3 | % | |
| Revenue | 4,902 | 100.0 | 4,038 | 100.0 | 21.4 | 4,719 | 100 | 3.9 |
| Gross Profit | 433 | 8.8 | 563 | 13.9 | -23.1 | 1,392 | 29.5 | -68.9 |
| Operating exp. | 370 | 7.5 | 325 | 8.0 | 13.8 | 450 | 9.5 | -17.8 |
| Operating income | 63 | 1.3 | 238 | 5.9 | -73.5 | 942 | 20.0 | -93.3 |
| Non-OP income (net) | 232 | 4.7 | -88 | -2.2 | -363.6 | -29 | -0.6 | -900.0 |
| Income before tax | 295 | 6.0 | 150 | 3.7 | 96.7 | 913 | 19.3 | -67.7 |
| Net Income | 246 | 5.0 | -44 | -1.1 | -659.1 | 810 | 17.2 | -69.6 |
| Shares | 150 | | 150 | | | 133 | | |
| EPS(NT\$) | 1.64 | | -0.29 | | | 6.09 | | |
| Tax rate | 16.61% | | 130.67% | | | 10.62% | | |

Note: EPS was calculated on the quarter-end shares 2011 Q3 minority interest income was \$2MN.

2011 Q3 Balance Sheets and Key Indices

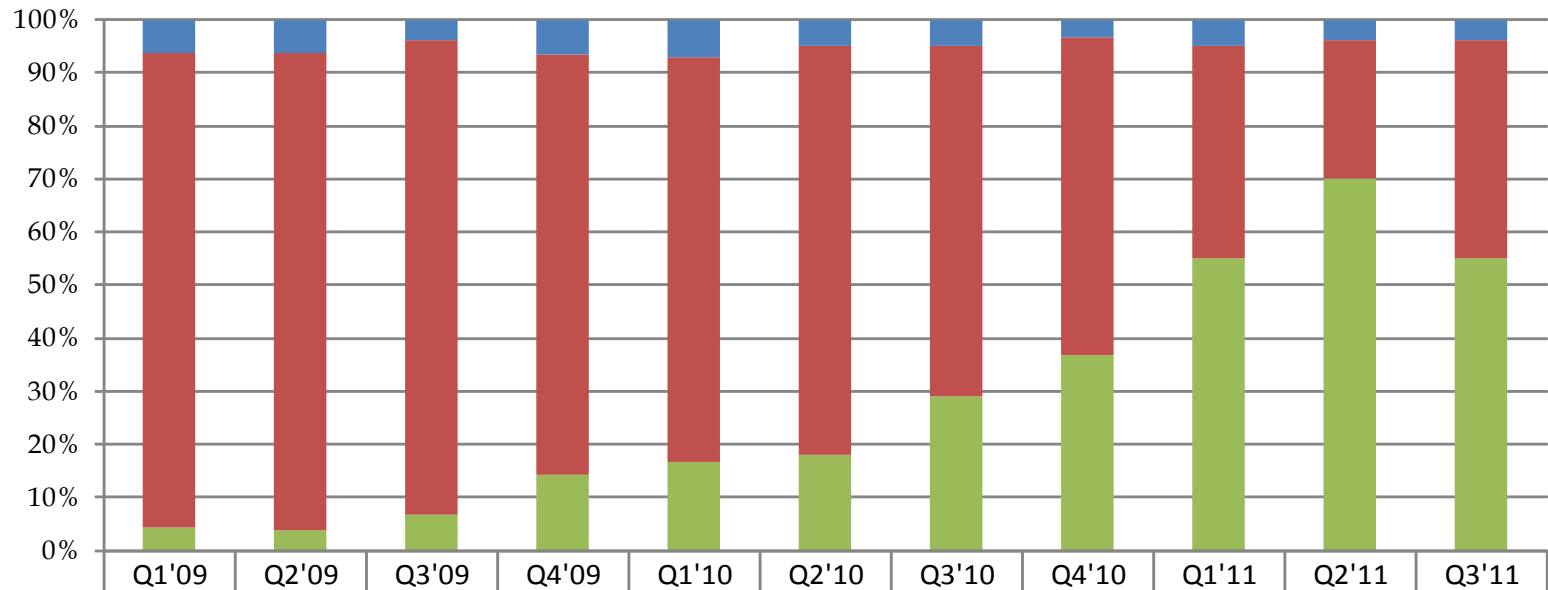
| | 2011 | 2011 | QoQ | 2010 | YoY |
|---------------------------|---------|---------|-------|---------|------|
| (NT\$ MN) | Sep. 30 | Jun. 30 | % | Sep. 30 | % |
| Cash & Cash Equivalents | 3,932 | 5,568 | -29.4 | 3,460 | 13.6 |
| Inventory | 2,254 | 2,655 | -15.1 | 1,941 | 16.1 |
| Short-Term Loans | 18 | 8 | 125.0 | 19 | -5.3 |
| Current Liabilities | 4,718 | 5,153 | -8.4 | 3,711 | 27.1 |
| Shareholder's Equity | 10,377 | 10,003 | 3.7 | 8,021 | 29.4 |
| Total Assets | 15,208 | 15,287 | -0.5 | 11,856 | 28.3 |
| Inventory Turnover (days) | 57 | 74 | | 54 | |
| Debt/Equity | 46.6% | 52.8% | | 47.81% | |
| Net Debt/Equity | 8.7% | -2.8% | | 4.68% | |
| ROE (Quarter) | 2.4% | -0.4% | | 10.7% | |

2011 Q3 Cash Flow

| | 2011 | 2011 | | 2010 | |
|---|------|------|----------|------|----------|
| (NT\$ MN) | Q3 | Q2 | QoQ % | Q3 | YoY % |
| Net cash provided by operating activities | 157 | -253 | -162.1 | 695 | -77.4 |
| Net income | 246 | -44 | -659.1 | 810 | -69.6 |
| Depreciation & Amortization | 133 | 120 | 10.8 | 122 | 9.0 |
| Net cash used in investing activities | -954 | -864 | 10.4 | -474 | 101.3 |
| Acquisitions of property, plant and equipment | -711 | -873 | -18.6 | -215 | 230.7 |
| Net cash used in financing activities | -767 | 9 | -8,622.2 | -7 | 10,857.1 |

YFO Revenue by Structure

1. Resistive TP accounts for 41% of the total revenue
2. Capacitive TP accounts for 55% of the total revenue



| | | | | | | | | | | | |
|---------------|-----|-----|-----|-----|-----|-----|-----|-----|-----|-----|-----|
| ■ Mechanronic | 6% | 6% | 4% | 6% | 7% | 5% | 5% | 3% | 5% | 4% | 4% |
| ■ Resistive | 90% | 90% | 89% | 79% | 76% | 77% | 66% | 60% | 40% | 26% | 41% |
| ■ Capacitive | 4% | 4% | 7% | 14% | 17% | 18% | 29% | 37% | 55% | 70% | 55% |

Comparative Statement of Profit & Loss Results

| For the nine-month ended (NT\$ MN) | 2011 | | 2010 | | YoY |
|---------------------------------------|--------|-------|--------|-------|--------|
| | Amount | % | Amount | % | |
| Revenue | 12,519 | 100.0 | 12,605 | 100.0 | -0.7 |
| Gross Profit | 1,569 | 12.5 | 3,894 | 30.9 | -59.7 |
| Operating exp. | 990 | 7.9 | 1,145 | 9.1 | -13.5 |
| Operating income | 579 | 4.6 | 2,749 | 21.8 | -78.9 |
| Non-OP income (net) | 192 | 1.5 | -32 | -0.3 | -700.0 |
| Income before tax | 771 | 6.2 | 2,717 | 21.6 | -71.6 |
| Net Income | 481 | 3.8 | 2,337 | 18.5 | -79.4 |
| Shares (M) | 150 | | 133 | | |
| EPS(NT\$) | 3.21 | | 17.57 | | |
| Tax rate | 37.48% | | 13.77% | | |

Note: EPS was calculated on the quarter-end shares 2011 Q3 minority interest income was \$3MN
Tax expense is included an additional tax at 10% of unappropriated earnings \$140MN.

Statement of Cash Flow

2011 & 2010

| For the nine-month ended (NT\$ MN) | 2011 | 2010 | YoY |
|---|--------|--------|--------|
| Net cash provided by operating activities | -22 | 2,078 | -101.1 |
| Net income | 481 | 2,337 | -79.4 |
| Depreciation & Amortization | 355 | 302 | 17.5 |
| Net cash used in investing activities | -2,350 | -1,412 | 66.4 |
| Acquisitions of property, plant and equipment | -2,179 | -984 | 121.4 |
| Net cash used in financing activities | -771 | -1,333 | -42.2 |



Keep in Touch!